



# *Friends of Sierra Rock Art*

P. O. Box 1409, Nevada City, CA 95959

[www.sierrarockart.org](http://www.sierrarockart.org)

---

Newsletter Vol. 16 No. 2

July 2007

---

## **PRESIDENTS MESSAGE**

July is the halfway point of the year, and the first half was very busy for FSRA! The May Event was SRO, for Hank Meal's terrific slide show and highly entertaining talk (or maybe it was the traditional dessert pot luck that drew them in). Over 100 people attended, and several joined FSRA!

Our annual site monitoring training, ably led by Nolan Smith and Bill Slater (and complete with doughnuts!), was also a success. As you know, FSRA's mission in part is to assist the Forest Service with protection of rock art sites, and we are committed to monitoring as many sites as we are able. There are more sites than there are active monitors, so everyone who has taken the training is urged to contact Bill Slater ([bslater@fs.fed.us](mailto:bslater@fs.fed.us)) or Ross Gralia ([gralia@nccn.net](mailto:gralia@nccn.net)) and select a site to monitor. Monitoring consists of a visit to the site in the beginning of the summer and again in the fall to note whether the site has been vandalized. Very easy, doesn't take much time, and gets you out in the beautiful Sierras! If you haven't already done so, please consider "adopting" a site to monitor.

The Outings Committee has confirmed our September outing to Bishop, CA – which is a rock art paradise! Mark your calendars and join us September 21, 22 and 23<sup>rd</sup>! Kirk Halford, BLM archaeologist, will be taking us to sites on Saturday, and we'll be doing the Bishop loop tour on our own on Sunday (see *A Guide to Rock Art Sites in Southern California and Southern Nevada* by David Whitley for a quick overview of these sites).

Now that summer is upon, I hope you have a chance to get out and enjoy the beauty of the Sierras, and participate in FSRA outings and monitoring efforts. Whatever your plans for the upcoming months, I encourage everyone to get involved, learn more about our archaeological heritage in the Sierras, and to have fun doing it!

Kate Harper  
President  
[ghostdancer@comcast.net](mailto:ghostdancer@comcast.net)

## **UPCOMING EVENTS**

**Society for California Archaeology – 2008 Annual Meeting, Burbank CA, April 17<sup>th</sup>–20<sup>th</sup>.**  
**American Rock Art Research Association – 2008 Annual Meeting, Farmington, NM, May 23-26<sup>th</sup>.**

## ANNOUNCEMENTS

**Dues - If you sent in your 2007 dues and they were returned, please resend them. We had a glitch with the post office.**

### **Alanah Woody, 51; helped to preserve rock art sites in Nevada**

From LA Times Staff and Wire Reports  
July 24, 2007

Alanah Woody, a scholar in the study of rock art who helped lead efforts to protect ancient American Indian petroglyphs and pictographs, has died. She was 51.

Woody, who taught anthropology and archeology at the University of Nevada, Reno, died Thursday, a few days after becoming ill, her family told the Reno Gazette-Journal. The cause of death was heart failure, the Associated Press reported.

As co-founder and executive director of the Nevada Rock Art Foundation, Woody was credited with mobilizing a small army of volunteers to record Nevada's vast collection of carvings and drawings known as petroglyphs and pictographs.

About a third of Nevada's 1,500 known rock sites have been recorded professionally. Some of the sites are small, such as those that have a few faint lines carved on a boulder; others are much bigger, including an 80-acre canyon with nearly 10,000 petroglyphs.

Most early Nevada rock art is abstract and made by hunter-gatherers who could have been marking territory, telling stories or trying to lure animals to waiting hunters.

"I am a rock art evangelist," Woody told Smithsonian magazine in 2005. "Give me people who think rock art is nothing more than a bunch of old graffiti on a boulder or cave wall. Let me take them out into the desert to see 10,000-year-old petroglyphs, and I guarantee they'll begin to feel a connection with the people who lived here long before we came along."

In May, Woody received a Nevada Historic Preservation Award for her work in preserving the state's ancient heritage. She also managed the anthropology collections at the Nevada State Museum in Carson City.

Woody was born in the Central Valley, the daughter of a hard-rock miner who worked on water tunnels and large construction projects. She traced her interest in other cultures to living in Pakistan from age 5 to 13.

She came to Nevada "for the same reason a lot of people do — to get a divorce," she said in the Smithsonian article.

With a son to support, she took an anthropology course and discovered her life's work. After receiving bachelor's and master's degrees in anthropology from the University of Nevada, Reno, Woody earned a doctorate in archeology in 2000 from the University of Southampton in England. She formed the rock art foundation a year later.

"Nevada may be the last best place for rock art," archeologist David Hurst Thomas of the American Museum of Natural History in New York said in the Smithsonian article. Woody tapped "public interest in it in a way that nobody in the professional archeology community could do before."

She is survived by her husband, Angus Quinlan; her son, Christopher; her father; and two brothers.

**A further note on Alanah Woody is provided by Don Fowler**



Dear All --

Alanah passed away at noon today. Her family, Angus Quinlan, her husband, Chris Woody, her son, her father and two brothers, and Angus's mother and sister from England, were with her. The family made the decision to remove the life support systems and she went quickly and peacefully. Please, if you would spread the word to people who knew her. We will be in touch with all of you very soon about carrying on the work and the projects she started. The home address is: 863 Long Leaf Lane, Minden, NV 89423-4611; tel: 775-782-5990

Don Fowler  
1010 Foothill Rd.  
Reno, NV 89511-9428  
775-853-3471  
[dfowler@nevadarockart.org](mailto:dfowler@nevadarockart.org)  
Sent: Thursday, July 19, 2007 1:15 PM

**Hi Rock Art Compadres--**

Thank you for being a Site Monitor with Friends of Sierra Rock Art. Your presence at rock art sites is important-- and it's fun. Your monitoring helps preserve these beautiful, archaeological features.

=====

**Have you VISITED your site YET ?**

**YES--**

Please Send completed Monitor Form to Bill Slater as soon as possible

**NO--**

Please monitor your site and send in the Monitor Form. If you're not able to monitor your site this season, please let us know.

**---> Report CUT-OFF September 20 th<---**

Forest Service reporting year ends September 30th.



**MONITOR FORMS RECEIVED AFTER September 30**

**will not be included until next years report.**

=====

Please send Monitor Form to:

Bill Slater, Archaeologist  
Tahoe National Forest  
631 Coyote Street  
Nevada City CA 95959  
[bslater@fs.fed.us](mailto:bslater@fs.fed.us)

*Thank You*

*FSRA Monitor Committee*  
Ross Gralia 530-265-6607  
Nolan Smith, Archaeologist 530-367-2224  
Bill Slater, Archaeologist 530-478-6287

## **2007 OUTINGS & ACTIVITIES**

The outings are still in the process of finalization. The below listed outings are tentative and subject to change, however,

July is "monitor your site month". Everyone should make an effort to check out their site and file a report on the current condition.

Mystery Site Field Trip! Join us on August 23, a Thursday evening, for a rare look at some nice glyphs on private property. These are prehistoric and historic glyphs, and we'll do a late afternoon and early evening viewing for best light. General vicinity is Donner Summit, but the owner doesn't want the site named in the newsletter because of security issues. If you are interested in attending, please contact Robert Chesney at 916-663-2575, or by email, [penrynpalms@sbcglobal.net](mailto:penrynpalms@sbcglobal.net), no later than August 19<sup>th</sup>. The trip is limited to twelve individuals, on a first come first served basis, as parking is limited.

SEPTEMBER OUTING TO BISHOP CONFIRMED! Kirk Halford, BLM Bishop Field Office archaeologist, will be our "tour guide" for rock art sites during our September outing, September 21, 22, and 23. This outing is limited to 15 people, so make your reservations early (by September 14<sup>th</sup>) with outings chair Robert Chesney, 916-663-2575 or [penrynpalms@sbcglobal.net](mailto:penrynpalms@sbcglobal.net).

These Internet sites will give you an overview of the richness of the rock art sites in the Bishop area:

<http://www.totalescape.com/active/leisure/sites/indianart/fishslough.html>

<http://www.totalescape.com/active/leisure/sites/indianart/tablelands.html>

<http://thesierraweb.com/generalinfo/petroglyphs.cfm>

Tentative schedule:

September 21: arrive, set up camp

September 22: field trips with Kirk Halford

September 23: Bishop loop rock art sites &/or Chalfont rock art site

FSRA has had several outings to the Bishop area in the past and all were fun and adventurous! A real rock art treat if you've never had the opportunity to visit these sites before. Please sign up as soon as possible so we can get organized and on the road!

October--Hawley Lake trip....contact Bill Slater, if interested.

## **ARTICLES**

### **2007 ARARA ANNUAL CONFERENCE**

Over 200 attended the annual conference in Billings June 29 through July 2. A full report on the conference will be in the next La Pintura, but following are a few items of interest. The successful auction brought in over \$3000, and over 150 people attended two days of field trips. Although overall the conference ran smoothly, there were a couple of unexpected events. First, the volume of American Indian Rock Art arrived in a timely fashion to be handed out to 2006-2007 members, but when the publication committee began checking through it, the volume had over 40 pages where words were dropped during printing. Thus, the journal has been returned to the printers for reprinting. Because it was the fault of the printer (the draft sent to us for review had all the words), cost of reprinting and of mailing volumes to members will be shouldered by the printing company. However, this means that you will not be receiving your journal in July, but reprinting is expected to be expedited by the company.

Second, a vehicle accident during the field trip to the Middle Fork of the Judith River cut short rock art viewing for that tour. The Forest Service archeologist acting as the tour leader rolled a Forest Service pickup which was transporting four ARARA members. Luckily all people in the vehicle survived, although one made a trip to the Lewistown hospital in the ambulance where he spent the next couple of days and two others were treated and released. We are grateful that all survived and thankful for those not in the accident who were there to help with the rescue and comforting of those involved.

ARARABoard@gmail.com <ARARABoard@gmail.com>  
Monday, July 09, 2007 10:58 AM

## **American Rock Art Researcher Association Annual Meeting Commentary by Nolan Smith**

The American Rock Art Research Association's (ARARA) Annual Meeting held in Billings Montana, was insightful, interesting, and fascinating. Friday the 29<sup>th</sup>, started out with a tour of Petroglyph Canyon, lead by BLM State Archaeologist, Gary Smith. Gary explained that Petroglyph Canyon is a Late Prehistoric rock art site listed on the National Register of Historic Places. The site contains over 38 panels of petroglyphs, with human figures dominating the artwork. The tour was an easy day long hike in a remote canyon with many places to explore, enjoy, and locate rock art. One of the highlights of the tour was William Big Day a Crow Indian, who gave a traditional Crow prayer prior to visiting the canyon. William was full of insight and was able to interpret several of the petroglyphs, which made the tour that much more interesting.

Friday night, Dee and I attended the reception at Pompeys Pillar National Monument, where we meet up with friends Jon and Sheila Harmon. It was incredible to see William Clarks signature carved into stone. Saturday and Sunday, we caught numerous papers ranging from the scientific to the fascinating? As with most conferences of this type, the emphasis was on the regional archaeology and rock art, most notably the shield bearing warriors. The business meeting was a 2+ hour long power point presentation with committee reports and such. Perhaps the session that interested me most was on Technology and Rock Art, with three papers focusing on 3D imaging and Jon Harman providing interesting insight into the Pictographs of Kachina Rockshelter. 3D imaging provides a 3D image of rock art, artifacts, and has excellent potential for use in the Sierras.

Monday, we were fortunate to be selected for the Weatherman Draw and Valley of the Shields tour, lead by keynote speaker Dr. Larry Loendorf. Even more fortunate Dee and I were able to ride with Larry as he provided excellent commentary to his 30+ years of work in the area. As it turned out, my archaeology professor Dr. L. K. Napton, from CSU, Stanislaus and Larry were students together at the University of Montana in the late 60s. Larry is an archaeologist in the truest sense of the profession, as he completed an excavation on Friday and on Saturday he was giving the keynote presentation based on the excavation in the Valley of the Shields he had just finished.

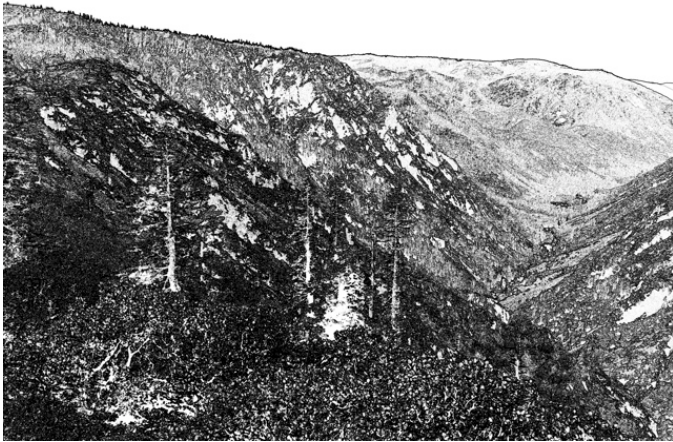


In the Valley of the Shields Dr. Loendorf pointed out that the area where the shields were made by first smoothing out a surface, then incising it, then adding paint inside the incised lines. During his excavation at

the base of the glyph in the photo (which has been backfilled) they found sandstone abrading tools, re-touched flakes, and other artifacts. This was a long term project as it first started 10 years ago, and he was just now getting back to completing the excavation. Dr. Loendorf was able to use accelerator mass spectrometry (AMS) which permits C14 dating of extremely small samples of organic materials, hence organic paint used on pictographs. Additionally, Dr. Loendorf use a portable X-Ray Fluorescence machine to analyze rock art pigments. This data provides a chemical breakdown of the pigments used at the site. This concluded the day and the sessions, as both Dee and I headed home with a whole new understanding of Plains Rock Art.

## **FSRA MEMBERS MEET TO PROTECT FRAGILE ROCK ART SITE**

By Jay Schuff



On June 30, 2007 10 FSRA members met with Carrie Smith, Tahoe National Forest Archaeologist, to discuss protective measures for a high Sierra fragile rock art site. The site is located high above the North American River and is near a four wheel drive recreation area. Petroglyphs at the site are in danger of degradation from foot traffic and graffiti. Protective measures under consideration are blocking the four wheel access with boulders, felling some large trees to further block access on the road, building a rock wall in back of the petroglyphs for protection from walking over the site, and installing a visitor registration box that would have educational materials inside. The petroglyph site is in

danger of more human impact as condominium developments are in the works in the Truckee area.

**Photo of the North Fork American River by Jay Schuff**

## **THIRTEEN FSRA SITE MONITORS TRAINED**

By Ross Galia, Monitor Committee June 9 was a fine day to learn more about monitoring Sierra Nevada Rock Art sites. Thirteen members attended the training, lead by Tahoe National Forest archaeologists Bill Slater and Nolan Smith.



In the morning, Bill and Nolan reviewed Federal laws relating to archaeology sites, confidentiality, pre-history of the Sierra Nevada and site monitor reporting forms, in preparation for an afternoon of field work.

This year, in the field, members revolved through “stations” to learn specific skills – Reading and interpreting the site record; using map and compass; recording vandalism by drawing and photography.

After our field training was completed, Grayson Coney, Cultural Director of the

Tsi-Akim Maidu, gave an impressive demonstration of the use of his hand-carved atlatl and spear. Grayson then instructed the group on how to approach a site and how to appreciate it's power.

**New FSRA site monitors attending were;** Jeffrey and Diane Thelen ,Truckee; Neal Stallions, Newcastle; Joel Houtman, Nevada City; Carolyn Carr, Grass Valley; Anne Higgins, Santa Rosa; and Ann Reisenhauer, Palo Alto. The Thelens and Anne Higgins are active members of Nevada Rock Art Foundation and were helpful sharing their experiences.

**Previously trained FSRA site monitors who reviewed their skills were** Kate Harper, Citrus Heights; Robert Chesney, Penryn; Ross and Maiya Gralia, Nevada City; Jane Punneo, Nevada City; Jan Culbert, of Grass Valley.

Most of the site monitors signed up for one or more sites to visit periodically. This presence at Rock Art sites of trained volunteers is an important part of protecting the irreplaceable rock art sites of the Northern Sierra Nevada.

## Hawley Lake Monitoring

Ann Higgins

On June 20 Ross and Maiya Gralia showed me the Hawley Lake site. We walked in from where we left their car about 3/4s of a mile from the A Tree junction, beyond the Plumas-Eureka State Park. It was about 4 miles to walk, between about 6400 and 7100 feet, a real challenge for me, a Bay Area resident. The walk was beautiful, crossing the Pacific Crest Trail a couple of times, overlooking Spencer Lake, and winding through an old mine which had lots of interesting debris around.



Hawley Lake is a beautiful lake, mostly privately owned, and the location of Camp Nejedly. Just south of the lake, along the drainage is the petroglyph site, situated on a large magnetite outcrop. It is very striking, sparkling black, east facing. For once it seemed very evident why the ancient people choose this site, and they covered it with images. They are hard to see because of repatination, but are very interesting. There are lines of dots or tic marks, concentric circles, rows of chevrons, zigzags, radiating lines, wavy lines, grids, rainbow lines, one big horned sheep, one circle with 17 radiating lines, and lots of deer hoof prints. Many images are superimposed, making them very hard to discern. It would be a very challenging site to document fully, but well worth the effort.

There is also a lot of graffiti, dated from 1870 through 2004. We saw no new graffiti in our brief visit.

It was a wonderful experience and I am very grateful to Ross and Maiya for showing me the site and especially for their patience as I walked slowly back to the car. I am very eager to return for my end-of-season visit, when I think that I will try to start earlier in the day.

## **FSRA NEWSLETTER**

Articles to the newsletter may be submitted to Nolan Smith via email at ndksmith@theunion.net or snail mail at 128 Celesta Drive, Grass Valley, CA, 95945. Please use Times New Roman font, and 12 font size, single spaced. All articles are the responsibility of the author and should be complete and ready to be included in the newsletter with little or no editing. Authors are also responsible for the content and accuracy of their articles. All articles reflect the opinion of the authors and not necessarily the FSRA. All articles should have the authors name and date submitted attached to them. Graphics such as digital photos, sketches, etc. can also be included with their locations included in the text of the article. If necessary, the Editor can scan photos and sketches. **For all correspondence to the newsletter, in subject line of email please put Newsletter.**

## **NEWSLETTER NOTES**

Members with email addresses will be sent a color copy of the newsletter, no hard copy will follow. Those members without email addresses will be getting a black and white hard copy of the newsletter, **several days later**. If you have any questions, comments, or needs contact me, via phone, snail mail, or email. Needless to say phone and email will get the quickest responses.

**NEXT NEWSLETTER DUE DATE IS: Oct. 15th, 2007.**

## **FSRA 2007 OFFICERS/ CHAIRPERSONS**

### **Board Members**

President	Kate Harper 916-218-6087 ghostdancer@comcast.net
Vice President	Robert Chesney 916.663.2575 penrynpalms@mybluelight.com
Treasurer	Jane Punneo York 265-2103 npunneo@ aol.com
Secretary	Maiya Gralia 530.265.6607 gralia@nccn.net
Members at Large	Agnes Walker 530.432.0950
	Jan Culbert jeculbert@sbcglobal.net 530-274-1259

### **Special Events/Committee Chairs**

Archives/Library	Nolan & Dee Smith
Bylaws	Maiya & Ross Gralia Kyle Ross
Historian	Agnes Walker 530.432.0950
May Events	Ross and Maiya Gralia
Newsletter	Nolan Smith
Outings/Membership	Kate Harper
Site Advocacy	Jay Schuff
Site Monitoring	Nolan Smith, Bill Slater
Website	Kyle Ross KJ3Ross2@directcon.net



# FRIENDS OF SIERRA ROCK ART

P.O. BOX 1409, Nevada City, CA 95959-1409

<http://www.sierrarockart.org>

## MEMBERSHIP RENEWAL:

Date: \_\_\_\_\_ DUES: \_\_\_\_\_ \$15.00 INDIVIDUAL \_\_\_\_\_ \$25.00

FAMILY/COUPLE

Name(s)

LAST \_\_\_\_\_ FIRST \_\_\_\_\_ MIDDLE INITIAL \_\_\_\_\_

LAST \_\_\_\_\_ FIRST \_\_\_\_\_ MIDDLE INITIAL \_\_\_\_\_

ADDRESS \_\_\_\_\_

CITY \_\_\_\_\_ STATE \_\_\_\_\_ ZIP \_\_\_\_\_ PHONE \_\_\_\_\_

Email \_\_\_\_\_

PLEASE MAKE CHECKS PAYABLE TO FSRA. Dues are for the calendar year. FSRA is not for profit. All proceeds are used to cover expenses and contributions to rock art projects. For anyone who joins after June, the dues will be reduced by 50%.

ALL MEMBERS ARE ENCOURAGED TO ACTIVELY PARTICIPATE IN FSRA COMMITTEES.

EDUCATION\_\_\_ SITE MONITORING \_\_\_ SITE RECORDING \_\_\_ MEMBERSHIP \_\_\_ WEB SITE \_\_\_

OUTINGS\_\_\_ SITE ADVOCACY \_\_\_ PUBLIC OUTREACH \_\_\_ MAY EVENTS\_\_\_ OTHER \_\_\_\_\_

All FSRA members are expected to read and agree to the FSRA Code of Ethics and sign a release of liability.

**NEWSLETTER (check one):** Snail Mail \_\_\_\_\_ or Email \_\_\_\_\_

*Friends of Sierra Rock Art*

P. O. Box 1409

Nevada City, CA 95959